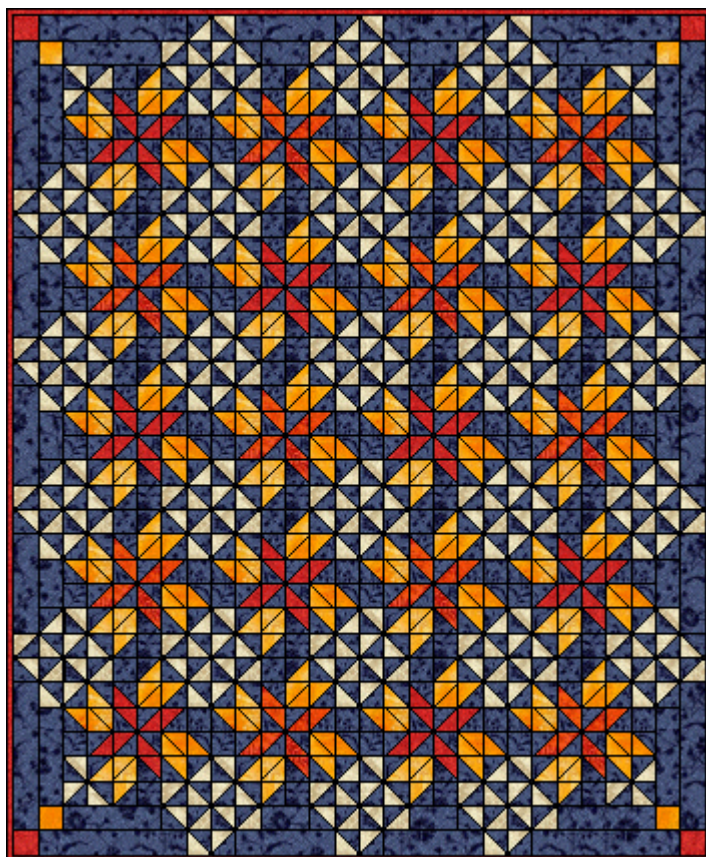


Four Winds - Page 2



The quilt is four blocks by five, with a border of extra Color 3/ Color 4 half squares, and Color 3 strips.

Happy Quilting Folks!





Marcia :o)

[Here's one that Gayle made!](#)

[Christine's!](#) [Lissa's!](#) [and Kata's Pillow!](#)

[Outi's!](#) [Susan's Bike Tank!](#) [...on Emily's Trailer](#)

** Supplies List **

-  Color 1 Color 1 needs: one 2-7/8" x 11-1/2" strip
-  Color 2 Color 2 needs: two 2-7/8" x 5-3/4" strips AND one 2-7/8" x 11-1/2" strip
-  Color 3 Color 3 needs: two 2-7/8" x 11-1/2" strips AND one 2-7/8" x 17-1/4" strip AND one 2-1/2" x 10" strip
-  Color 4 Color 4 needs: one one 2-7/8" x 17-1/4" strip

[To the Patterns](#) or [The Quilter's Cache](#)

Feb 2 2002 Marcia Hohn

mh paper

[Page 1](#)

Traditional Block

<http://www.quilterscache.com>